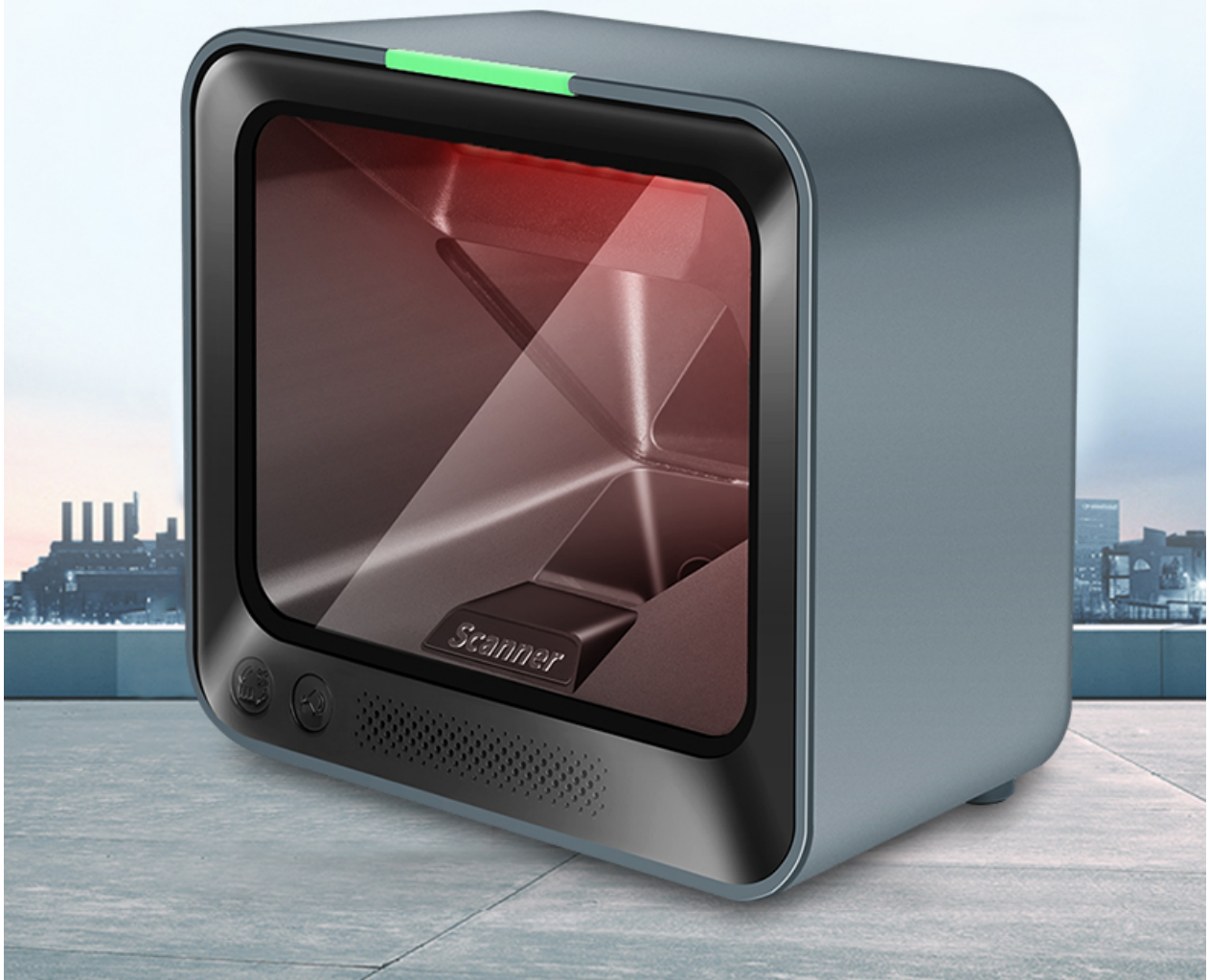


# POS 2D Image Desktop Barcode Scanner

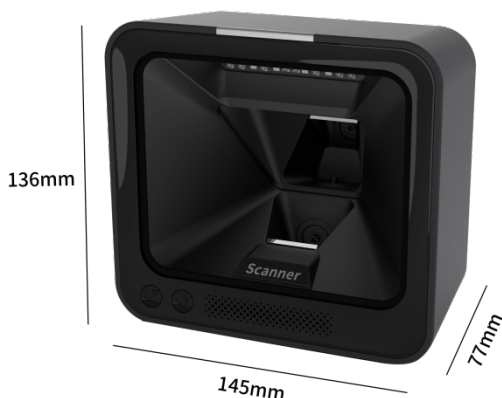
Dual core AI chip | Infrad Sensor | Eye safe LED design  
(Desktop, wall-mounted, embedded types)



**Desktop Omni Scanner**

**Model: AW-7600**

## Appearance



## Performance

Image Sensor	CMOS 1280*800
Light Source	Red LED + LED
Scan Angle	Skew $\pm$ 70° Pitch $\pm$ 60° Roll 360°
FOV	D=44.6° H=36.4° V=27.8°
Resolution	$\geq$ 5mil
Minimum Print Contrast	$\geq$ 20%

## Decode Capacity

1D	Codabar, Code 11, Code 128, Code 39, Code 32, Code 93, EAN-8, EAN-13, ISBN, ISSN, UPC-A, UPC-E, GS1 DataBar, ISBT128, NEC 2 of 5, MSI Plessey, GS1 128, Industrial 2 of 5, Telepen, Interleaved 2 of 5, Matrix 2 of 5, Hong Kong 2 of 5, Postal Code, Trioptic, Straight 2 of 5 IATA
2D	QR Code, Micro QR, Data Matrix, PDF417, Micro PDF417, HANXIN, Aztec Code, Maxi code

## Typical Decode Range

Code39 (5mil)	0 mm~40 mm Barcode Size: 25mm*10mm
EAN-13 (13mil)	5 mm~270 mm Barcode Size: 31mm*17mm
QR (15mil)	0 mm~200 mm Barcode Size: 8mm*8mm

## Physical characteristics

Interface	USB / RS232
Operating Voltage	5 VDC $\pm$ 5%
Operating Current(typical)	450mA (5 VDC)
Operating Current(Max)	480mA (5 VDC)
Standby Current	220mA (5 VDC)
Power Consumption	2250mW
Dimension(not with stand)	145(W) $\times$ 77(D) $\times$ 136(H)mm
Dimension(with stand)	145(W) $\times$ 84.5(D) $\times$ 147(H)mm
Color	Gray-blue
Net weight	415g (not with stand) / 520g (include stand)
Country Keyboards	30 country keyboard
Indication	LED indicator, Beeper

## Environmental

Operating Temperature	-10°C ~ 50°C
Storage Temperature	-20°C~ 60°C
Humidity	5%~95% (Non-condensing)
Drop	Can withstand multiple drops from a height of 1m onto a concrete floor.
IP Level	IP52
ESD	EN61000-4-2, $\pm$ 6KV direct charge, $\pm$ 15KV air charge
Ambient Light	0~100,000LUX
LED Safety	IEC 62471

## Accessories

USB Cable	For data transmission, power supply.
RS232 Cable	For data transmission, power supply.